

COREL[®]



CorelDRAW[®]
GRAPHICS SUITE **X4**

Reviewer's Guide

CorelDRAW[®]

GRAPHICS SUITE X4

Contents	
1 	Introducing CorelDRAW Graphics Suite X4 1
2 	Customer Profiles.....3
	Design professionals 3
	Occasional graphics users 3
3 	What’s Included with CorelDRAW Graphics Suite X4? ..5
	Applications 5
	Supporting applications 5
	Content..... 6
	Documentation 6
	Training..... 6
	Minimum system requirements 6
4 	Top New and Enhanced Features7
	Streamline your workflow 7
	Find your design assets 9
	Accelerate layout and text editing 11
	Get inspired and gain knowledge 14
	Discover advanced image-editing features..... 16
5 	Summary of New and Enhanced Features 19
6 	Design Gallery23
7 	About Corel28

1

Introducing CorelDRAW® Graphics Suite X4

CorelDRAW® Graphics Suite X4 is an affordable and comprehensive suite of intuitive page-layout, illustration, photo-editing, and bitmap-to-vector tracing applications. The trusted choice of professional and aspiring designers, the suite includes new tools that fuel the creative process, simplify project management, and optimize the graphic design workflow.

Users of CorelDRAW Graphics Suite X4 can confidently tackle a wide variety of projects — from logos and Web graphics to multipage brochures and eye-catching signs. With its text and page-layout enhancements, market-leading file format compatibility, and high-quality content, this powerful suite is the ultimate design partner to help users turn inspiration into stunning results.

For increased design flexibility, CorelDRAW® X4 now lets users create independent layers for each page of a document. The new CorelDRAW® ConceptShare™ docker is a valuable online collaboration tool, and the ability to import PDF files with comments makes it easier than ever to work with colleagues and clients. In addition to providing its redesigned workspace icons, menus, and controls, CorelDRAW X4 includes an enhanced Print Merge wizard, a new Table tool for drawing and editing tables, and integration with WhatTheFont™ — the font identification service from MyFonts.com.

With Corel PHOTO-PAINT® X4, the workspace icons, menus, and controls have also been redesigned and many image-adjustment features now have an integrated histogram, which provides visual feedback in real time. Users can now work with raw camera files more easily, and new thumbnail previews make it easier to find files. In addition, Corel® PowerTRACE™ X4 has been enhanced to give users more control over bitmap-to-vector conversion.

Rounding out the suite, Corel CAPTURE™ X4 is a screen-capture utility that lets users copy images of their computer screens in a single click. With the new Welcome screen, users have a centralized location to start new projects, access recently used documents, get instructional information, and view inspiring designs from other CorelDRAW Graphics Suite users around the world. Plus, the *CorelDRAW® Handbook — Insights from the Experts* provides artwork, helpful advice, and design techniques from professional designers.

2

Customer Profiles

Design professionals

Design professionals in advertising and printing industries spend much of their time creating and editing graphics, working with text, and retouching photos. With time-saving features such as interactive layout tables, live text formatting, and independent page layers, CorelDRAW Graphics Suite X4 gives them innovative design tools that optimize their workflow.

Other design professionals focus primarily on sign making, screen printing, and engraving. These users frequently repurpose and combine such content as graphic designs, scanned logos, clipart images, and fonts. With powerful image-editing capabilities, specialized fonts, tracing software that turns bitmaps into editable vector graphics, and high-quality content, CorelDRAW Graphics Suite X4 gives them a comprehensive, versatile, and affordable solution.

Creative professionals focus primarily on graphic design for print and for the Web. In addition to its intuitive page-layout and design tools, CorelDRAW Graphics Suite X4 gives them market-leading compatibility with commonly used file formats.

Occasional graphics users

For entrepreneurs and small to medium-size businesses interested in creating marketing materials in-house, CorelDRAW Graphics Suite X4 provides powerful text and page-layout tools that ensure professional-looking results. Self-taught in graphic design, these occasional users can confidently turn to CorelDRAW Graphics Suite X4 to modify existing designs, to retouch photos, and to create ads, flyers, and other marketing collateral.

Business users in medium-size to large enterprises value the ability to work with more than 100 file formats as well as create professional, graphically rich projects — from sales presentations to Web graphics.

Hobbyists do not use graphic design software to earn a living, but they do use it occasionally to create projects — such as newsletters, calendars, banners, and photo layouts — for personal or community use. With an extensive collection of learning tools, CorelDRAW Graphics Suite X4 makes it easy to create impressive results without professional training.

3

What's Included with CorelDRAW® Graphics Suite X4?

Applications

- **CorelDRAW® X4:** CorelDRAW X4 is an intuitive vector-illustration and page-layout application that meets the demands of today's busy design professionals and occasional graphics users. It delivers results fast, whether users are creating a company logo or working toward demanding production schedules.
- **Corel PHOTO-PAINT® X4:** Corel PHOTO-PAINT X4 is a professional image-editing application that lets users quickly and easily retouch and enhance photos. It is specifically designed for use in a graphics workflow.
- **Corel® PowerTRACE™ X4:** Professional designers often receive poor-quality bitmap images from clients and face the challenge of turning these bitmaps into high-quality vector images for business cards, brochures, signs, or other promotional items. Corel PowerTRACE X4 solves this problem by letting users quickly and accurately convert bitmaps into editable vector graphics.
- **Corel CAPTURE™ X4:** Corel CAPTURE X4 is a one-click screen-capture utility that lets users capture images from their computer screens.

Supporting applications

- **Barcode wizard:** The Barcode wizard lets users generate bar codes in a wide range of industry-standard formats.
- **Service Bureau Profiler:** The Service Bureau Profiler helps users prepare their work for professional output.
- **Duplexing wizard:** The Duplexing wizard helps users optimize their work for printing two-sided documents.
- **Bitstream® Font Navigator®:** The Bitstream Font Navigator is an award-winning font manager for the Windows® operating system. It lets users manage, find, install, and preview fonts.

Content

- A collection of more than 10,000 high-quality clipart and digital images includes 4,000 new images, all of which were individually selected to meet the needs of design professionals and occasional graphics users
- **New!** 1,000 professional high-resolution digital photos
- 1,000 OpenType® fonts, including 75 Windows Glyph List 4 (WGL4) fonts and 10 single-line engraving fonts
- 80 professionally designed templates

Documentation

- User guide
- *CorelDRAW® Handbook — Insights from the Experts*
- Digital content guide
- Quick-reference card
- Help files

Training

- 2 hours of training videos on DVD

Minimum system requirements

- Windows XP (with Service Pack 2 or later), or Windows Vista® (32-bit or 64-bit editions)
- 512 MB of RAM, 275 MB of hard disk space
- Pentium® III, 800MHz processor or AMD Athlon™ XP
- 1,024 × 768 or better monitor resolution
- DVD drive
- Mouse or tablet

4

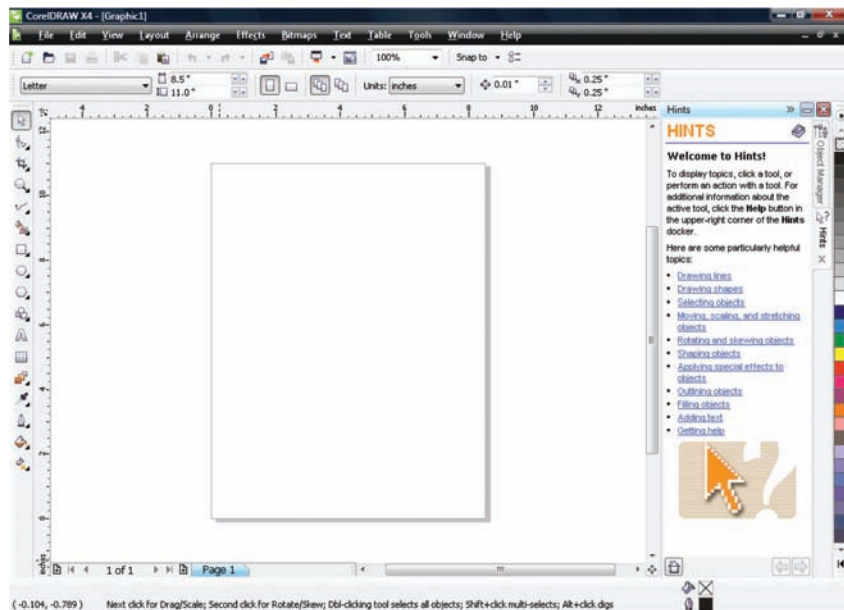
Top New and Enhanced Features

CorelDRAW Graphics Suite X4 is an affordable and comprehensive suite that combines intuitive page-layout, illustration, photo-editing, and bitmap-to-vector tracing applications. The trusted choice of professional and aspiring designers, the suite includes new tools that fuel the creative process, simplify project management, and optimize the graphic design workflow.

Streamline your workflow

With its redesigned and modernized user interfaces, new collaboration tools, and enhanced features, CorelDRAW Graphics Suite X4 can help users streamline their workflow without compromising creativity or flexibility.

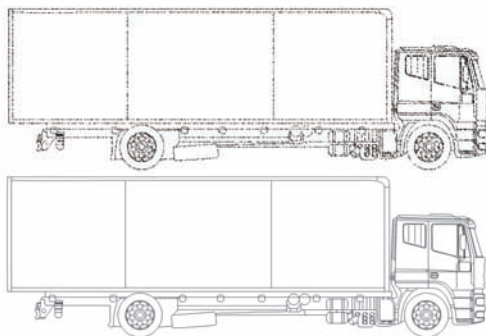
New! Modernized user interface (UI): For CorelDRAW Graphics Suite X4, the user interface has been redesigned. New icons, menus, and controls give the applications a fresh appearance and provide a more intuitive working environment.



The redesigned CorelDRAW X4 user interface

New! CorelDRAW® ConceptShare™: The new CorelDRAW ConceptShare docker is a valuable online collaboration tool. In a Web-based environment, CorelDRAW ConceptShare lets users share their designs and ideas with colleagues or clients in real time. Users can easily create multiple workspaces, upload their designs, and invite others to provide feedback or submit their own ideas.

Enhanced! Corel® PowerTRACE™ X4: With Corel PowerTRACE X4, users can quickly and easily trace bitmaps, converting them into editable and scalable vector images. The new Centerline Trace method produces more accurate strokes and is perfect for tracing line drawings or signatures. To control which colors appear in the traced results, users can easily edit, merge, or delete colors on the color palette that is generated by PowerTRACE. In addition, improved smoothing and corner control help users optimize their traced results.



The new Centerline Trace method is ideal for tracing line drawings or signatures.

Give it a try

Using the Centerline Trace method

- 1 In CorelDRAW X4, click **File ▶ Import**.
- 2 In the Import dialog box, browse to the folder that contains a bitmap of a line drawing or a signature that you want to trace, select the bitmap, and click **Import**.
- 3 On the drawing page, click where you want to place the bitmap, or to center the bitmap on the page, click **Enter**.
- 4 Click **Bitmaps ▶ Centerline Trace**, and choose one of the following:
 - **Technical illustration** — to trace black-and-white illustrations with thin, faint lines
 - **Line drawing** — to trace black-and-white sketches with thick, prominent lines

If necessary, adjust the traced results by using the controls in the PowerTRACE dialog box.

New! Windows® Color System support: CorelDRAW Graphics Suite X4 supports the Windows Color System, which enables users to more closely match colors between Corel and Microsoft applications.

New! Adobe® Color Management Module: CorelDRAW Graphics Suite now supports the Adobe Color Management Module (CMM), which provides consistent color transformations by using industry-standard International Color Consortium® (ICC) color profiles. This makes it easy for users to closely match colors between Corel and Adobe applications.

Enhanced! Print Merge: With CorelDRAW X4, the Print Merge wizard makes it easier than ever to combine text from a data source with a drawing. As a result, invitations, labels, certificates, or other projects that place unique, personalized text on the same design are faster and easier to produce. In addition, users now have the ability to output a print merge to the CorelDRAW file format (CDR). CorelDRAW X4 supports the following data sources: text (TXT), comma-separated values (CSV), Rich Text Format (RTF), and other files supported by Open Database Connectivity (ODBC) data sources.

Enhanced! Customizable workspace: In addition to letting users customize the application's command bars, commands, and button arrangements, CorelDRAW Graphics Suite X4 includes preset workspaces that have a similar look and feel to those of Adobe® Photoshop®, Adobe® Illustrator®, or Microsoft® Office. These preset workspaces make it easier for users to transition to CorelDRAW Graphics Suite. Users can also export a custom workspace to share it with other users.

Enhanced! PDF Comments support: CorelDRAW X4 now supports PDF Comments, which gives users the option of importing comments and annotations when they import a PDF file. This makes it quicker and easier for users to access and leverage feedback from clients and colleagues.

Enhanced! Microsoft® Visual Basic® for Applications 6.4: For users who want to automate their workflow, CorelDRAW Graphics Suite X4 supports the latest version of Microsoft Visual Basic for Applications (VBA) 6.4.

New! Dynamic product updates: With CorelDRAW Graphics Suite X4, the Welcome screen is a valuable resource that provides users with immediate access to new content, tips and tricks, product registration, and the latest product updates. From within the application, users can choose to install product updates automatically or to receive notification when updates are available.

Find your design assets

With market-leading file format compatibility, a convenient file search, and an abundance of new, editable content, CorelDRAW Graphics Suite X4 makes it easier for users to exchange files and find the right design asset for the job.

Enhanced! Windows Vista® integration: CorelDRAW Graphics Suite X4 has been designed to take advantage of the latest innovations from the Windows Vista operating system. From within the operating system dialog boxes, users can search for files by author, subject, file type, date, keywords, or other file properties. Users can also easily add keywords or other notes when

saving files in order to better organize their projects. In addition, users can edit file properties from within the CorelDRAW Graphics Suite X4 applications or from Windows Explorer and Windows Vista Search. Users of Windows XP can use Windows Desktop Search or any other desktop search application that supports the iFilter format.

New! Content: CorelDRAW Graphics Suite X4 includes an abundance of new, editable content on an easily searchable DVD. Users can browse through 10,000 clipart images to find inspiration for their next design project. These high-quality vector graphics are easily adapted. In addition, 1,000 new high-quality photos on various subjects and themes are included.

New! Specialized fonts: With a collection of specialized fonts, CorelDRAW Graphics Suite X4 helps users ensure that their output is optimized for its intended audience. An extended selection of new fonts includes single-line engraving fonts and OpenType® cross-platform fonts, which offer enhanced language support for Latin, Greek, and Cyrillic outputs in WG4L format.

Engraver Fonts

A collection of specialized fonts includes engraving fonts.

New! Template search and preview: In CorelDRAW X4, the New From Template dialog box has been completely redesigned to provide users with more information so that they can easily choose the right template for the job. Users can now preview templates by Type, such as flyer or postcard, or by Industry, such as hospitality, retail, or services. Users can also search for templates by using keywords.

New! Professionally designed templates: CorelDRAW Graphics Suite X4 includes more than 80 professionally designed and customizable templates, which give users a great starting point for their designs. Flexible and easy to repurpose, the templates are now accompanied by Designer Notes. These notes provide information on the design choices made for the template, tips for outputting a design based on the template, and instructions for customizing the template while still adhering to design principles.

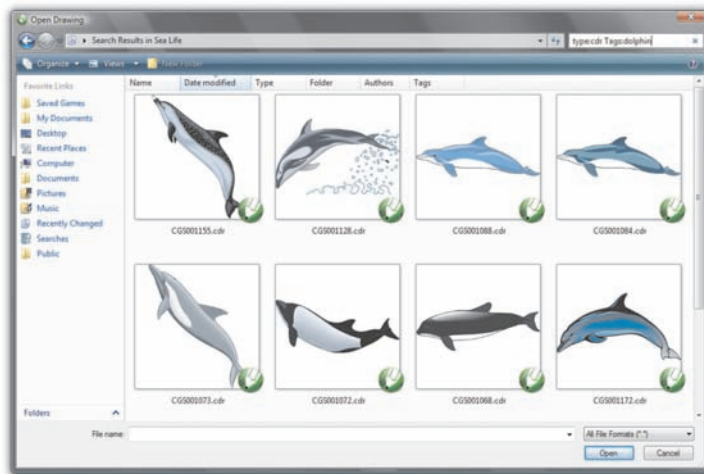


An abundance of customizable templates are a great starting point for design projects.

Enhanced! Adobe® product support: To ensure a seamless workflow, CorelDRAW Graphics Suite X4 provides enhanced support for Adobe Photoshop CS3, Adobe Illustrator CS3, PDF 1.7, PDF/A, and Adobe® Acrobat® 8. When exporting CorelDRAW Graphics Suite X4 files to the new Adobe Illustrator CS3 format, users can now choose a format for text in the exported files. This makes it easier for users to exchange files between the applications. In addition, users can save files to the PDF/A format — the file format approved by the International Organization for Standardization (ISO) for long-term archiving of electronic documents.

New! File format support: CorelDRAW Graphics Suite X4 maintains its position as market leader in file format compatibility by adding support for Microsoft® Publisher (versions 2002, 2003, and 2007). Users can also expect seamless compatibility with Microsoft® Word 2007, AutoCAD® DXF™ and AutoCAD® DWG™ (versions R2.5 to 2007), and Corel® Painter™ X, making it easier than ever to exchange files with colleagues and clients.

New! Thumbnail previews: New, high-quality thumbnail previews make it easier to find and organize CorelDRAW and Corel PHOTO-PAINT files.



High-quality thumbnail previews make it easier for users to find their files.

Accelerate layout and text editing

With an interactive Table tool, independent page layers, real-time text formatting previews, and an integrated font identification feature, CorelDRAW Graphics Suite X4 can help users accelerate document design.


New! Interactive tables: The new, interactive Table tool in CorelDRAW X4 lets users create and import tables to provide a structured layout for text and graphics. Users can easily align, resize, or edit tables and table cells to suit their designs. In addition, users can convert delimited text into a table or convert a table into delimited text. Users can also easily add and adjust images in individual table cells.



The new Table tool makes it easy to create a structured layout with graphic elements embedded in table cells.

Give it a try

Creating a table

- 1** In CorelDRAW X4, click the **Table** tool  in the toolbox.
- 2** On the property bar, type values in the **Number of rows and columns** boxes.
The value you type in the top portion specifies the number of rows; the value you type in the bottom portion specifies the number of columns.
- 3** Drag diagonally to draw the table.

New! Independent page layers: With CorelDRAW X4, users can now control and edit layers independently for each page of a document, reducing the occurrence of pages with empty layers. Users can also add independent guidelines for individual pages and master guidelines for an entire document. This gives users the ability to create different layers on a page-specific basis, unconfined by a single document structure. In addition, the new Duplicate Page command gives users the flexibility to copy a page with all objects included or just the layer structure, making it easier to repurpose existing designs.

Give it a try

Working with independent page layers

- 1** In CorelDRAW X4, click **File** ▶ **New**.
- 2** Click **Window** ▶ **Dockers** ▶ **Object Manager**.


Give it a try

- 3 In the upper-right corner of the Object Manager docker, click the flyout button, and click **New Layer**.
- 4 Type a name for the new layer, or click to accept the default naming convention (Layer 2).
Page 1 of your document now has two independent layers. To make a layer active, click the layer name.
The name of the active layer is indicated by a bold red font.
- 5 To create a new page, click the flyout button in the top right corner of the Object Manager docker, and click **New Page**.
- 6 Repeat steps 3 and 4 to create a new layer.
Page 2 of your document now has two independent layers.

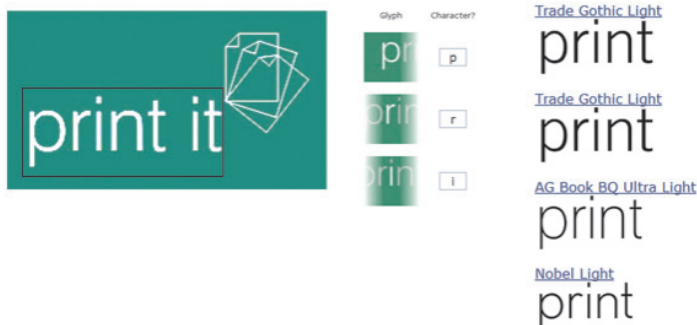
New! Live text formatting: CorelDRAW X4 introduces live text formatting, which lets users see how a text formatting change will look before applying it to a document. This handy and time-saving formatting aid reduces the need to undo and redo unsatisfactory changes. Users can now scroll through and preview many different formatting options, including fonts, font size, and alignment.

Give it a try

Previewing text formatting

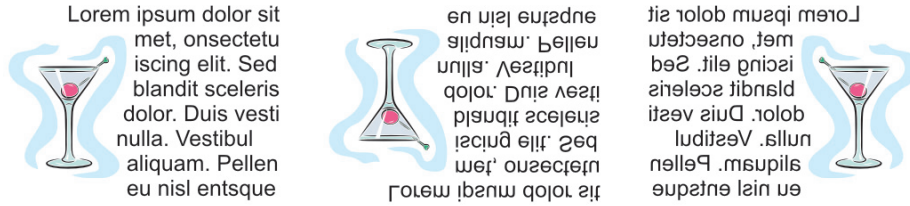
- 1 In CorelDRAW X4, click the **Text** tool  in the toolbox.
- 2 Drag in the drawing window to size the paragraph text frame, and type to add text.
- 3 On the property bar, click the **Font List** list box, and scroll through the available fonts.
As you hover over a font, CorelDRAW X4 displays a preview of how that font will look when applied to your document.

New! Font identification: CorelDRAW Graphics Suite X4 now integrates with WhatTheFont™, the online font identification service from MyFonts.com. Users can save time by immediately identifying the font used in existing designs or artwork received from clients (English only).



Integration with WhatTheFont makes it quick and easy to identify fonts.


New! Mirror paragraph text: With CorelDRAW X4, users can now interactively mirror text. Users can mirror text horizontally or vertically, or both, which is essential for outputting content for certain specialized devices.



Users can easily mirror paragraph text.

Give it a try

Mirroring paragraph text

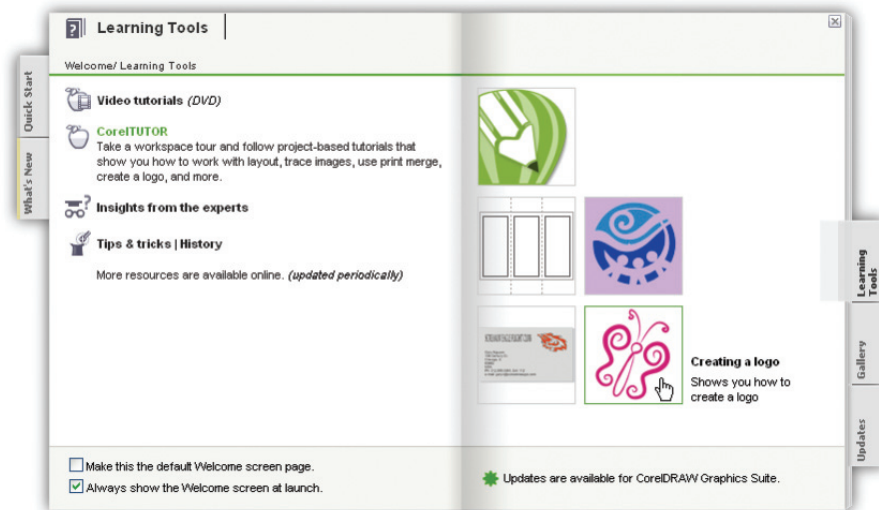
- 1 In CorelDRAW X4, click the **Text** tool  in the toolbox.
- 2 On the drawing page, drag to create a paragraph text frame.
- 3 Type to add text to the frame.
- 4 On the property bar, click one or both of the following buttons:
 - **Mirror horizontally** — flips the text characters from left to right
 - **Mirror vertically** — flips the text characters from top to bottom

Enhanced! Quotation marks: CorelDRAW X4 users can now customize quotation marks for specific languages. Users can edit quotation mark styles and choose which style is used when typing in different languages. For example, users can change the style of double, single, and straight quotation marks for a specific language.

Get inspired and gain knowledge

With CorelDRAW Graphics Suite X4, it's never been easier to get started, find inspiration, or gain knowledge. The Welcome screen, expert tutorials, and other learning tools offer invaluable assistance to both new and experienced users.

New! Welcome screen: With a new Welcome screen, CorelDRAW Graphics Suite X4 provides users with a centralized location to access recently used documents, templates, and learning tools, which include Tips & Tricks and video tutorials. To inspire users, the Welcome screen also includes a gallery that showcases designs created by CorelDRAW Graphics Suite users around the world.



The Learning tools accessible from the Welcome screen

New! CorelDRAW® Handbook — Insights from the Experts: This new book showcases practical, real-world examples of accomplished designs by CorelDRAW experts. By deconstructing designs and sharing their wisdom and best practices, experts from a variety of industries demonstrate the power of CorelDRAW Graphics Suite X4.

New! Training videos: CorelDRAW Graphics Suite X4 includes 2 hours of training videos on DVD. Topics include illustration, design, and image-editing fundamentals, industry-specific design principles, and output details for various media, such as print or the Web.

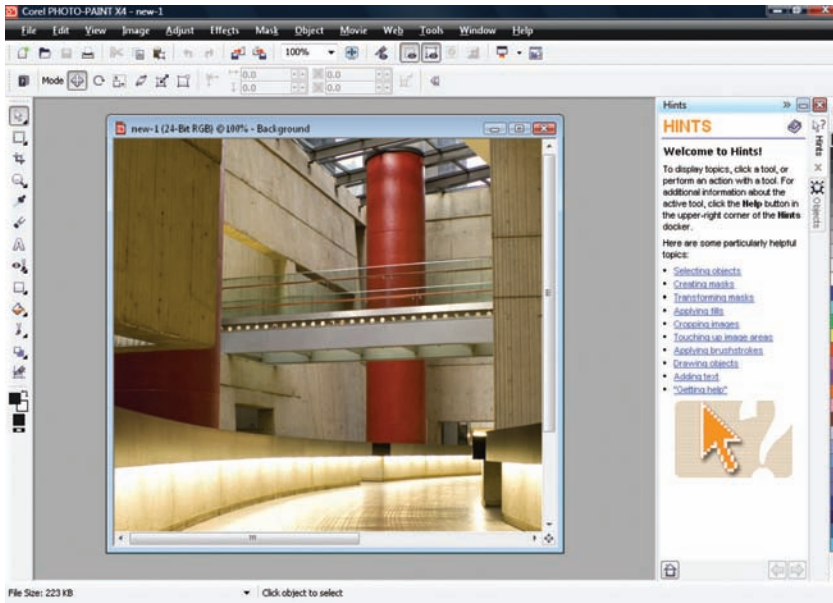
Enhanced! CorelTUTOR™: With CorelTUTOR™, users can access online, project-based tutorials that help them learn and use the applications. In addition to touring the workspaces of both CorelDRAW X4 and Corel PHOTO-PAINT X4, users can learn how to work with page-layout features, get started with bitmap-to-vector tracing, try the enhanced print-merge functionality, create a logo, and much more.

New! CorelDRAW® community site: Accessible from within the application, the CorelDRAW.com community site gives users a place to get together to share information and learn from other users. Combining forums, blogs, galleries, and other resources, CorelDRAW.com is a valuable information resource for professional designers and occasional graphics users alike. Visit the site today to discover the creations and inspirations of this growing community.

Discover advanced image-editing features

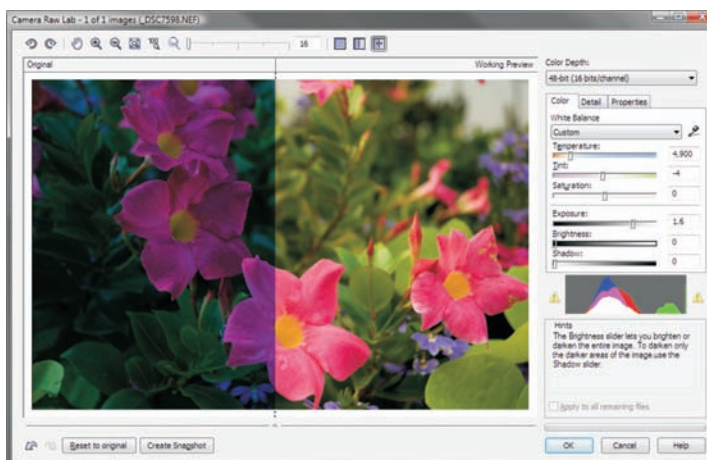
CorelDRAW Graphics Suite X4 provides advanced image-editing features that help users get expected results the first time.

New! Corel PHOTO-PAINT® user interface: The Corel PHOTO-PAINT X4 user interface has been redesigned and modernized with new icons, menus, and controls.



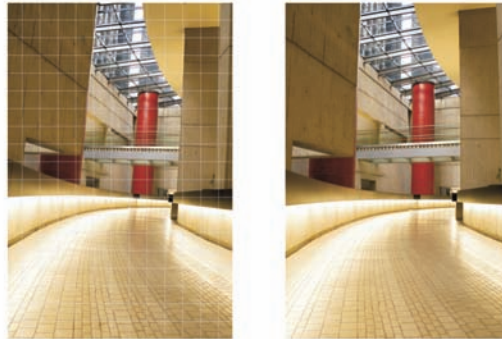
The redesigned Corel PHOTO-PAINT user interface

New! Raw camera file support: CorelDRAW Graphics Suite X4 now supports raw camera file formats for more than 300 different types of cameras. This lets users import raw camera files directly from their digital camera. With interactive controls that provide real-time previews, users can view file properties and camera settings, adjust image color and tone, and improve image quality.



CorelDRAW Graphics Suite X4 lets users work with raw camera files.

New! Straighten image: With CorelDRAW Graphics Suite X4, users can quickly and easily straighten images that were scanned or photographed at an angle. The interactive controls, a grid with vertical and horizontal guidelines, and an integrated histogram that provides results in real time, make it easier than ever to straighten crooked images. In addition, users can choose to have their images automatically cropped.



Users can quickly and easily straighten crooked images.

Give it a try

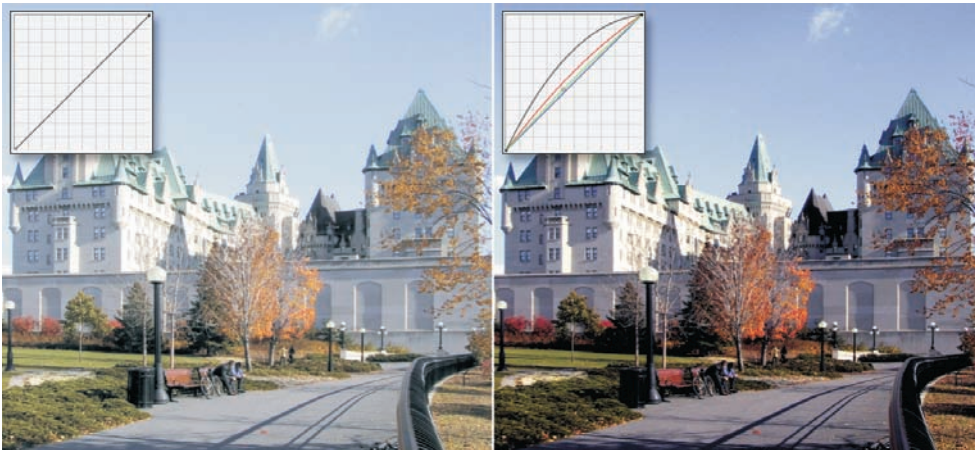
Straightening an image

- 1** In Corel PHOTO-PAINT X4, open an image that you want to straighten.
- 2** Click **Adjust ▶ Straighten Image**.
- 3** In the Straighten Image dialog box, move the **Rotate image** slider, or type a value between 15 and -15 in the **Rotate image** box.
- 4** To crop and straighten the image, enable the **Crop image** check box. The image is cropped to preserve the aspect ratio of the original image, which means that the final image is smaller than the original image.
If you want to preserve the width and height of the original image, enable the **Crop and resample to original size** check box. The final image is resampled.
- 5** When you are satisfied with the result, click **OK**.

Enhanced! Adobe® Photoshop® CS3 support: Corel PHOTO-PAINT X4 provides support for Adobe Photoshop CS3 so that users can seamlessly exchange files between the applications.

New! Histogram feedback: In CorelDRAW Graphics Suite X4, more features and effects now provide histogram feedback in real time. This lets users edit images more efficiently by previewing changes and comparing results as they adjust image tone, apply effects, or process raw camera files.

Enhanced! Tone Curve adjustments: In Corel PHOTO-PAINT X4, the Tone Curve dialog box has been enhanced to help users adjust their images with more precision. With an integrated histogram, users now receive real-time feedback as they make adjustments to their images. In addition, the new Eyedropper lets users pinpoint specific color locations on the tone curve of their image. Users can also select, add, or delete nodes along the tone curve.



Users now receive real-time feedback when adjusting the tone curve of an image.

Give it a try

Adjusting the tone curve of an image

- 1** In Corel PHOTO-PAINT X4, open an image that requires tone and color adjustments.
- 2** Click **Adjust ▶ Tone Curve**.
- 3** In the Tone Curve dialog box, use the tone curve on the graph to adjust the balance between the shadows, midtones, and highlights of the image.
The x-axis of the graph represents the tonal values of the original image; the y-axis of the graph represents the adjusted tonal values.
- 4** To undo any unsatisfactory adjustments, click the **Reset** button.
- 5** When you are satisfied with the result, click **OK**.

5

Summary of New and Enhanced Features

The following is a list of the new and enhanced features offered by CorelDRAW Graphics Suite X4.

Streamline your workflow

- Enjoy the **new, more intuitive user interface** with redesigned and modernized icons, menus, and controls.
- Use the **new CorelDRAW® ConceptShare™** to collaborate with colleagues or clients in real time.
- Save time and enjoy more control over bitmap-to-vector conversion with the **enhanced Corel® PowerTRACE™ X4**.
- Closely match colors between Corel and Microsoft applications with the **new Windows® Color System**.
- Easily match colors between Corel and Adobe applications with the **new Adobe® Color Management Module**.
- Easily combine a drawing with text from a data source by using the **enhanced Print Merge wizard**.
- Let the **customizable workspaces** simplify the transition to CorelDRAW Graphics Suite, or choose a preset workspace that resembles Adobe® Photoshop®, Adobe® Illustrator®, or Microsoft® Office.
- Collaborate more easily with colleagues and clients by using the **enhanced support for PDF Comments**.
- Automate workflow with **enhanced support for Microsoft® Visual Basic® for Applications 6.4**.
- Gain more control over panning and zooming with **enhanced mouse-wheel scrolling**.
- Get immediate access to the latest product updates, new content, and special offers from within the application.

Find your design assets

- Take advantage of the **enhanced Windows Vista® integration** to easily organize projects and search for files.
- Leverage an abundance of **new, editable content** which includes 10,000 clipart images and 1,000 high-quality photos.
- Ensure that output is optimized for its intended audience with a collection of **specialized fonts**, including single-line engraving fonts and OpenType® cross-platform fonts.
- Use the **new, redesigned New From Template dialog box** to find the right template for any job.
- Access **80 professionally designed templates** with notes about design choices, output tips, and ways to maintain good design when customizing templates.
- Experience **enhanced compatibility with Adobe® products**, including Adobe® Photoshop® CS3, Adobe® Illustrator® CS3, PDF 1.7, PDF/A, and Acrobat® 8.
- Enjoy seamless compatibility with commonly used file formats, including **new support for Microsoft® Publisher**, as well as AutoCAD® DXF™, AutoCAD® DWG™, and Corel® Painter™ X.
- Easily find Corel PHOTO-PAINT® files with **new, high-quality thumbnail previews**.

Accelerate layout and text editing

- Use the **new, interactive Table tool** to provide structured layouts for text and graphics.
- Experience greater layout freedom with **new independent page layers**.
- Enjoy the convenience of **new, live text formatting** to preview formatting changes before they are applied.
- Save time by quickly identifying fonts with the **new integration with WhatTheFont™**.
- **Mirror paragraph text** horizontally or vertically, or both.
- Customize **quotation marks** for specific languages.
- Save time with applications that use proper **numeric formats** by recognizing the operating system's regional settings.

Get inspired and gain knowledge

- Quickly access recently used documents, templates, learning tools, and inspiring designs from the **new Welcome screen**.
- View breathtaking projects and learn from seasoned design professionals with the **new CorelDRAW® Handbook — Insights from the Experts**.
- Delve into the **2 hours of new DVD training videos**.

- Access online, project-based instruction with **new and updated tutorials from CoreITUTOR™**.
- Visit **CoreIDRAW.com** and share designs, ideas, and inspiration with this growing online community.

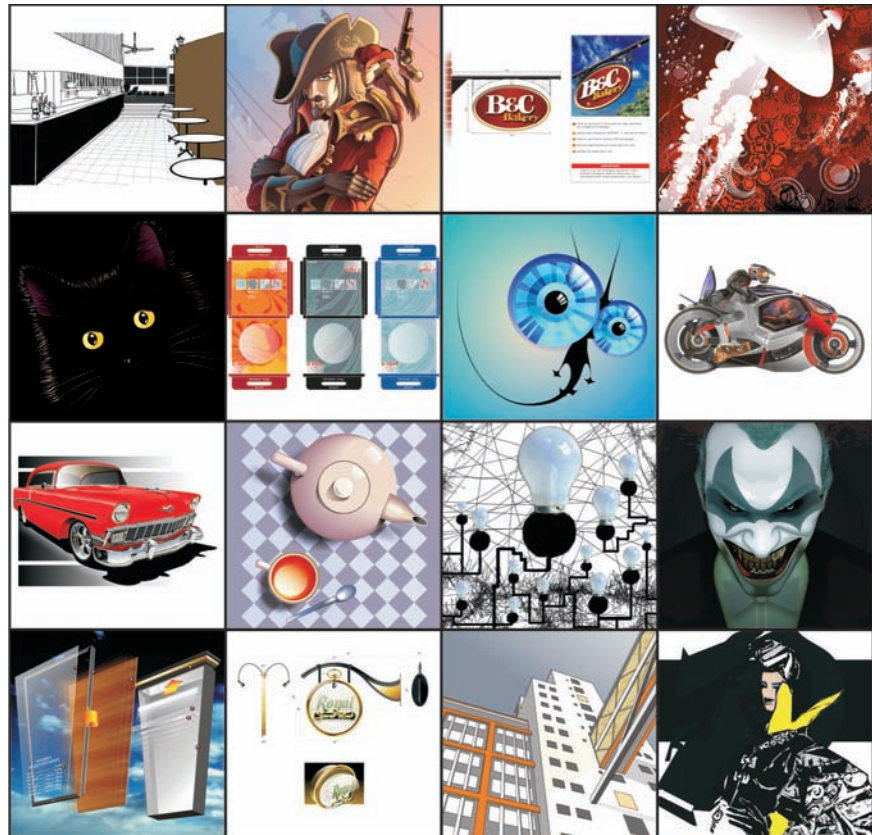
Discover advanced image-editing features

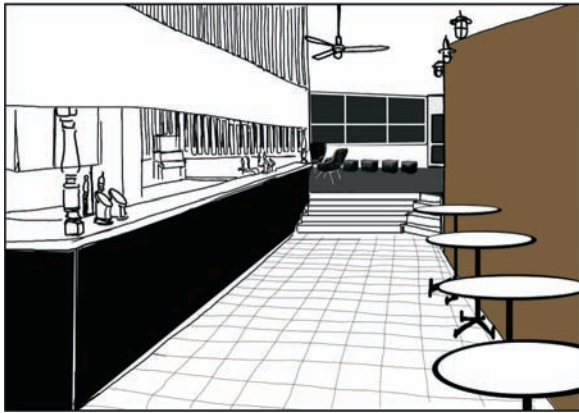
- Experience **new support for raw camera files** with interactive controls that let users preview adjustments in real time.
- Use new, interactive controls to quickly and easily **straighten images**.
- Preview image-editing changes in real time by using **histogram feedback**, available with more features than ever before.
- Adjust images with more precision by using the **enhanced Tone Curve dialog box**.
- Get **streamlined page sizes** that better reflect the geographic location of the user.

6

Design Gallery

As a trusted and versatile design tool, CorelDRAW Graphics Suite has been embraced by graphic design professionals around the world, in areas as diverse as airbrushing murals, vehicle illustration, magazine layout, and fashion design. In the following pages, you'll find examples of the imagination and passion that CorelDRAW Graphics Suite users bring to their projects.

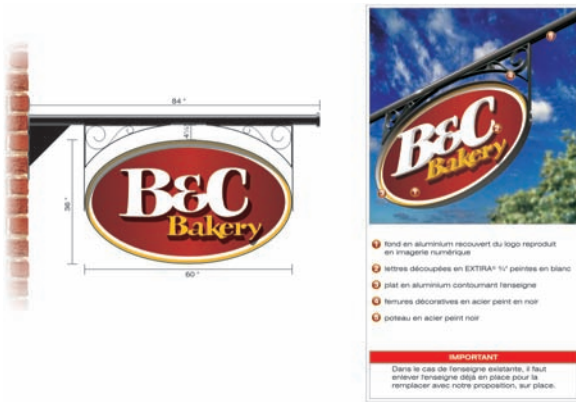




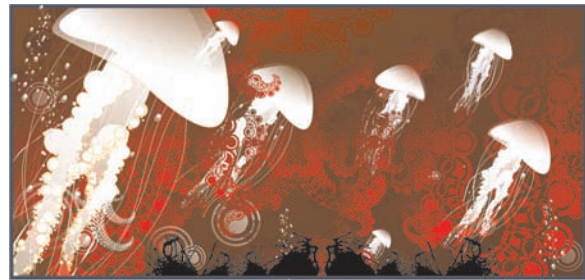
Stefan Lindblad - Sweden



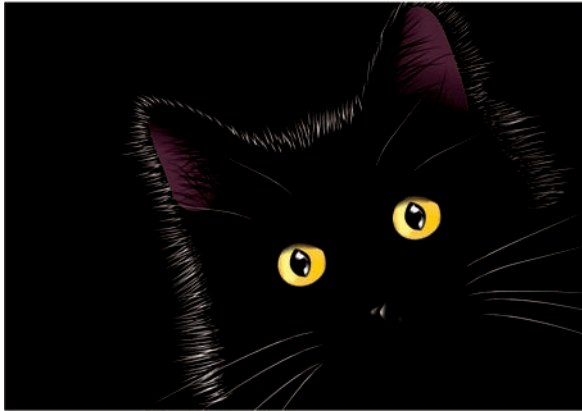
Sergey Sezonov - Russia



Stefan Tetreault - Canada



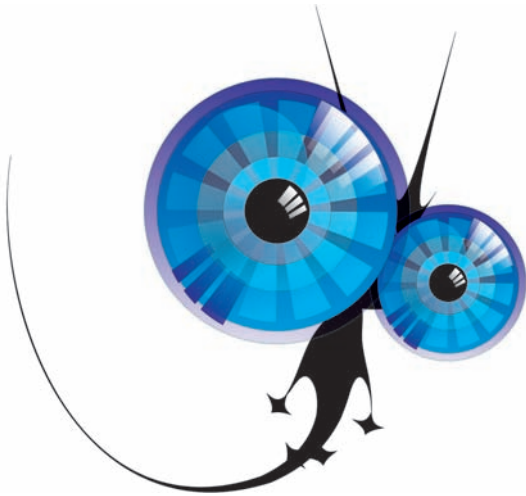
Rodolfo Biglié - Czech Republic



Ariel Garaza Díaz - Spain



Michaela Maginot - Germany



Rodolfo Biglié - Czech Republic



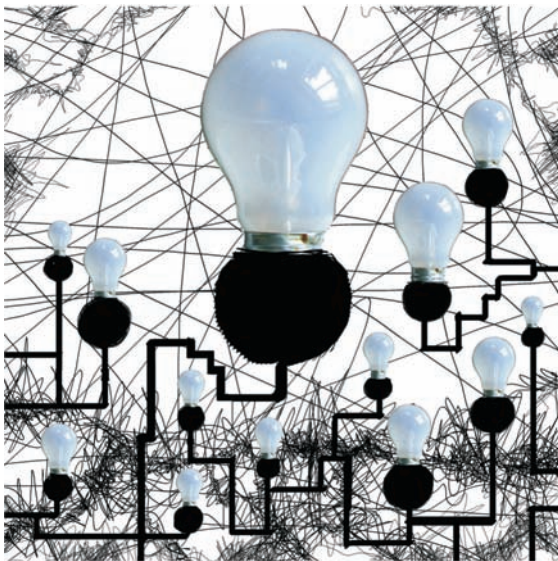
Igor Tkac - United States of America



Bufe Combe - United States of America



Hugo Hansen - Denmark



Stefan Lindblad - Sweden



Stanislav Pronin - Russia

About Corel

Corel is a leading developer of graphics, productivity, and digital media software, with more than 100 million users worldwide. The company's product portfolio includes some of the world's most popular and widely recognized software brands, including CorelDRAW® Graphics Suite, Corel® Paint Shop Pro®, Corel® Painter™, Corel DESIGNER®, Corel® WordPerfect® Office, WinZip®, and iGrafx®. In 2006, Corel acquired InterVideo, makers of WinDVD®, and Ulead, a leading developer of video, imaging, and DVD authoring software. Designed to help people become more productive and express their creative potential, Corel's full-featured software products set a higher standard for value in being easier to learn and use. The industry has responded with hundreds of awards recognizing Corel's leadership in software innovation, design, and value. Corel's products are sold in more than 75 countries through a well-established network of international resellers, retailers, original equipment manufacturers, online providers, and Corel's global Web sites. With its headquarters in Ottawa, Canada, the company has major offices in the United States, the United Kingdom, Germany, China, and Japan. Corel's stock is traded on the NASDAQ under the symbol CREL and on the TSX under the symbol CRE.

Copyright © 2007 Corel Corporation. All rights reserved.

CorelDRAW® Graphics Suite X4 Reviewer's Guide

Protected by U.S. Patents 5652880; 5347620; 5767860; 6195100; 6385336; 6552725; 6657739; 6731309; 6825859; 6633305; Patents Pending.

Product specifications, pricing, packaging, technical support and information ("specifications") refer to the retail English version only. The specifications for all other versions (including other language versions) may vary.

INFORMATION IS PROVIDED BY COREL ON AN "AS IS" BASIS, WITHOUT ANY OTHER WARRANTIES OR CONDITIONS, EXPRESS OR IMPLIED, INCLUDING, BUT NOT LIMITED TO, WARRANTIES OF MERCHANTABILITY, SATISFACTORY QUALITY, MERCHANTABILITY OR FITNESS FOR A PARTICULAR PURPOSE, OR THOSE ARISING BY LAW, STATUTE, USAGE OF TRADE, COURSE OF DEALING OR OTHERWISE. THE ENTIRE RISK AS TO THE RESULTS OF THE INFORMATION PROVIDED OR ITS USE IS ASSUMED BY YOU. COREL SHALL HAVE NO LIABILITY TO YOU OR ANY OTHER PERSON OR ENTITY FOR ANY INDIRECT, INCIDENTAL, SPECIAL, OR CONSEQUENTIAL DAMAGES WHATSOEVER, INCLUDING, BUT NOT LIMITED TO, LOSS OF REVENUE OR PROFIT, LOST OR DAMAGED DATA OR OTHER COMMERCIAL OR ECONOMIC LOSS, EVEN IF COREL HAS BEEN ADVISED OF THE POSSIBILITY OF SUCH DAMAGES, OR THEY ARE FORESEEABLE. COREL IS ALSO NOT LIABLE FOR ANY CLAIMS MADE BY ANY THIRD PARTY. COREL'S MAXIMUM AGGREGATE LIABILITY TO YOU SHALL NOT EXCEED THE COSTS PAID BY YOU TO PURCHASE THE MATERIALS. SOME STATES/COUNTRIES DO NOT ALLOW EXCLUSIONS OR LIMITATIONS OF LIABILITY FOR CONSEQUENTIAL OR INCIDENTAL DAMAGES, SO THE ABOVE LIMITATIONS MAY NOT APPLY TO YOU.

Corel, the Corel logo, CorelDRAW, Corel DESIGNER, Corel PHOTO-PAINT, CorelTUTOR, iGrafx, Paint Shop Pro, Painter, PowerTRACE, WinZip, WinDVD, and WordPerfect are trademarks or registered trademarks of Corel Corporation and/or its subsidiaries in Canada, the U.S., and/or other countries.

Acrobat, Adobe, Illustrator, and Photoshop are either registered trademarks or trademarks of Adobe Systems Incorporated in the United States and/or other countries. AutoCAD, DWG, and DXF are registered trademarks or trademarks of Autodesk, Inc., in the USA and/or other countries. ConceptShare is a trademark of ConceptShare Inc. in Canada, the United States and/or other countries. International Color Consortium is a registered trademark of the International Color Consortium. Microsoft, OpenType, Visual Basic, Windows, and Windows Vista are either registered trademarks or trademarks of Microsoft Corporation in the United States and/or other countries. MyFonts, MyFonts.com, and WhatTheFont are registered trademarks or trademarks of MyFonts.com, Inc. Other product, font, and company names and logos may be trademarks or registered trademarks of their respective companies.

CorelDRAW[®]

GRAPHICS SUITE X4

Media Contact

Kelly Manuel
PR Manager, Graphics
Corel Corporation
Office: 613-728-0826 x1223
Cell: 613-668-5483
kelly.manuel@corel.com

Corel Corporation

1600 Carling Ave.
Ottawa, ON
Canada K1Z 8R7

COREL[®]

www.corel.com