



CorelCAD™ 2013

powered by ARES®

Reviewer's Guide

CorelCAD™ 2013

powered by ARES®

Contents

1 Introducing CorelCAD 2013.....	1
2 Customer profiles.....	3
3 Key features.....	5
Open and save native DWG files.....	5
Work with industry-standard CAD features.....	5
Design in 2D and 3D.....	7
Built for speed on Windows & Mac OS.....	8
Customize & automate for greater efficiency.....	9
Compatibility for a smoother workflow.....	10
4 Integrating CorelCAD 2013 into other graphics workflows.....	11
5 Comparing CorelCAD 2013 for Windows and Mac OS....	13

1



Introducing CorelCAD™ 2013

For those who want high-level CAD performance without the high cost, CorelCAD™ 2013 is the smart solution for day-to-day design work that requires precision and detail.

Enterprises that rely on CAD design have always had tough choices to make about CAD software. They could work with an application that fit within their company's budget, but lacked critical tools or used formats that impeded collaboration and sharing. Or, they could get a CAD tool that natively uses the industry-standard file type, but at a steep price. CorelCAD simplifies things by offering an inexpensive, full-featured 2D CAD application with 3D solid modeling tools.

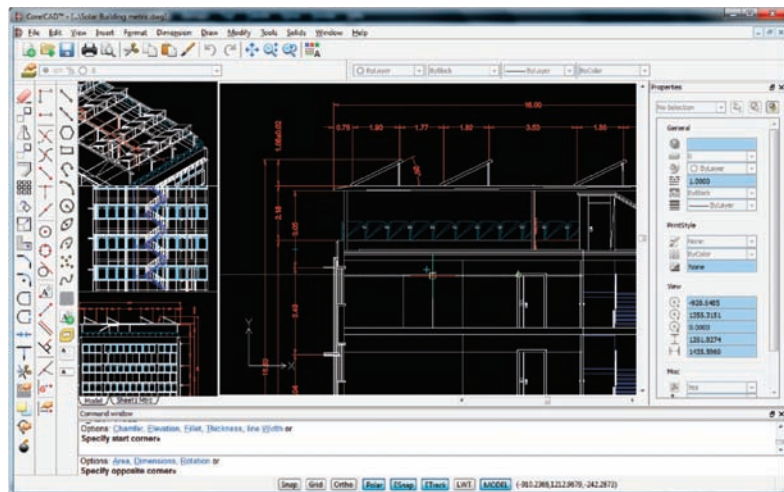
Working with CAD files is becoming more commonplace for a wide range of graphics professionals, from technical illustrators to designers in marketing departments. Not every day, certainly, but enough that being able to open and repurpose CAD content is no longer just a bonus, it's becoming a must. The ability to edit DWG™ files and share that content with colleagues and clients

saves an organization both time and money, but the cost of the initial investment in a CAD tool has been prohibitive — until now.

The native CorelCAD file format (DWG) supports the latest AutoCAD® 2013 DWG format, ensuring the total fidelity with the industry standard. CorelCAD can handle the file attributes of non-supported AutoCAD features and preserves functionality in DWG files, eliminating conversion and sharing issues.

If you're familiar with other popular CAD tools, making the transition to CorelCAD 2013 is straightforward. CorelCAD incorporates a range of tools, commands and UI elements found in other CAD software so any CAD designer can quickly get to work with no learning curve.

Windows has traditionally been the operating system of the CAD world, but there are pockets of dedicated Mac users. With that in mind, CorelCAD is optimized for both platforms — and at a fraction of the price of other CAD software available for the Mac.



2

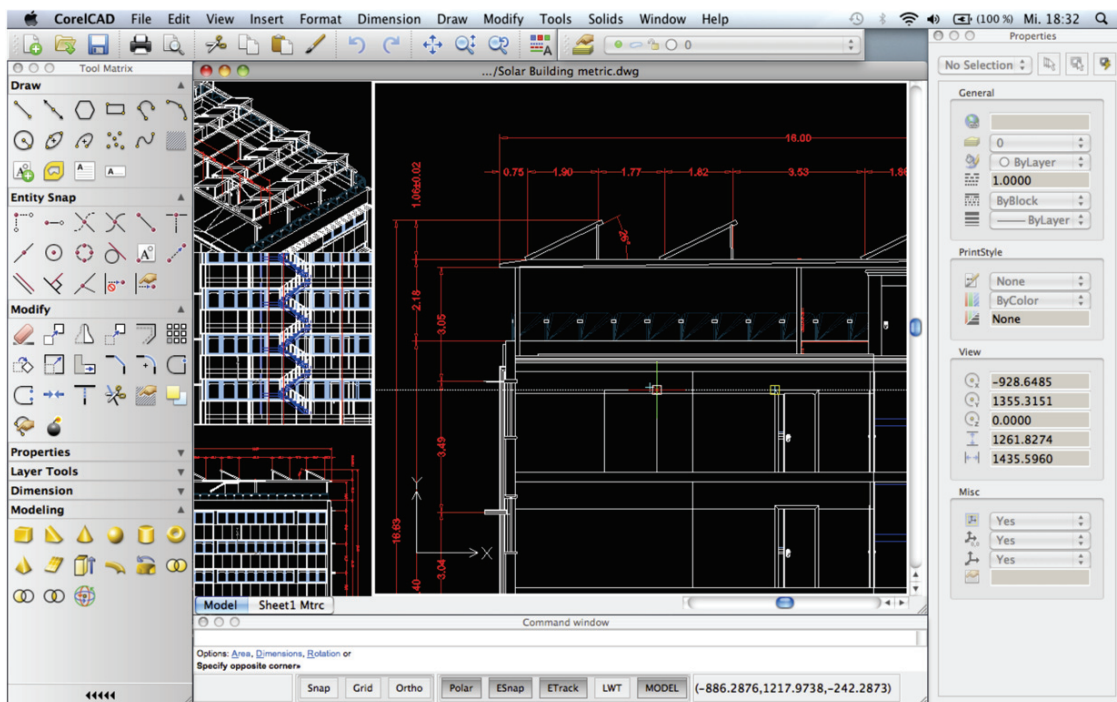


Customer profiles

Architects, Engineers, and CAD (AEC) service providers

In the AEC sector, CAD designers work primarily in 2D, but with an increasing emphasis on 3D design. They work for small to medium-sized firms and create a variety of drawings, including 2D designs for drafting and construction plans, elevations, floor plans, and construction details. Their projects are just as likely to be created from scratch as to be based on legacy design components. The ability to collaborate and exchange files with colleagues and clients is critical to their workflow. And, many architects prefer the Macintosh operating system or work in a hybrid Windows® PC and Macintosh environment.

CorelCAD 2013 offers a lightweight, standards-compliant 2D application that supports 3D solid modeling. The ability to work in the DWG format, including AutoCAD 2013 DWG files, eliminates any conversion issues when exchanging files with colleagues or reusing legacy files. Collaboration is simplified and accelerated through support for voice notations and commenting in editable drawings. In addition, files can be exported to CorelDRAW (CDR)*, Corel DESIGNER (DES)*, and PDF, simplifying information sharing with other departments in their company, such as documentation or marketing. What's more, CorelCAD 2013 is optimized for both Windows and Mac OS, so users can work on the platform they prefer (* Windows version only).



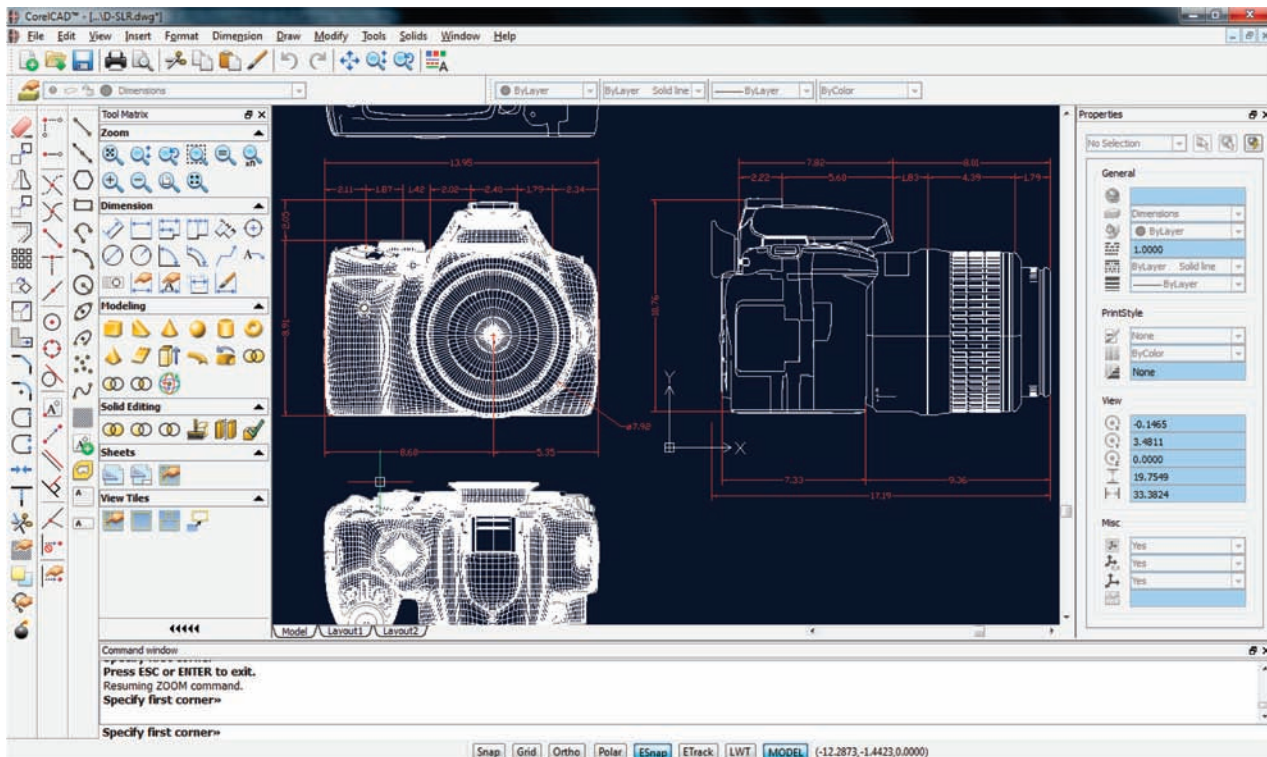
Occasional 2D CAD users

There are two groups of occasional 2D CAD users, each with distinct needs and workflows.

Firstly, CAD designers working for large enterprises in the manufacturing sector design primarily in 3D, however, they still need 2D support. The types of drawings they design include assembly schematics and parts details, and many of their legacy files are 2D CAD (.DWG), which have to be maintained. A 2D draft will often serve as the basis for a 3D design, and they need to be able to repurpose 3D files to add detail to 2D drawings. To share their work with other departments, they publish CAD drawings to a range of formats.

Secondly, graphic designers need a tool to edit CAD files that supports all elements of DWG drawings, such as model spaces and layout sheets. They work in marketing and technical documentation departments, and the ability to work with 2D CAD files allows them to reuse design content in user guides, marketing materials, and presentations.

CorelCAD addresses these needs by offering an affordable, standards-compliant 2D CAD application that complements 3D CAD solutions. The ability to import drafts from CorelDRAW (CDR), and export CAD drawings to CorelDRAW and Corel DESIGNER file formats* simplifies repurposing content, ensuring that users can maintain and reuse legacy content (* Windows version only).



3



Key features

CorelCAD 2013 helps you be more productive with native .DWG file support, industry-standard CAD features, customizable 2D and 3D design tools, and compatibility with a range of formats. Optimized for both Windows and Mac OS, CorelCAD delivers impressive speed, performance, and customization on your platform of choice.

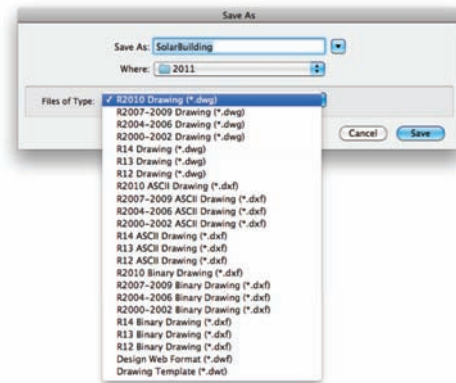
Open and save native DWG™ files

All CAD tools let you work with AutoCAD® DWG™, but many have their own native formats. When these other file types are converted to and from .DWG, critical parts of the drawing can be lost or misrepresented. And if business associates work with another CAD tool, they sometimes can't even open third-party proprietary files. CorelCAD uses .DWG as its primary drawing format, so you're assured of worry-free collaboration.

As much as other CAD tools can import and export .DWG files, their native file types often contain elements that aren't supported in .DWG. Conversely, AutoCAD has features that aren't supported in some other applications, which can cause untimely, unwanted surprises. CorelCAD 2013 can handle the file attributes of non-supported AutoCAD features and preserves functionality in DWG files, delivering full compatibility when collaborating with partners and customers who work with the DWG file format.

CorelCAD 2013 also offers compatibility with any file created in AutoCAD R12 right up to AutoCAD 2013. The ability to save drawings back to widely adopted R12 DWG and DXF™ formats allows you to keep using any legacy hardware, such as a

laser engraver or plotter that only reads that version. In addition, CorelCAD even helps you recover damaged or corrupted DWG and DXF files in all format versions.



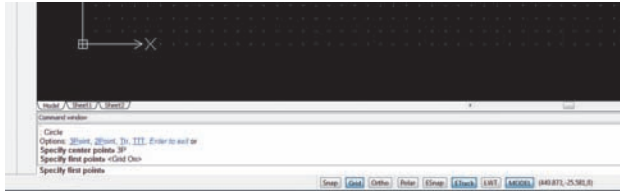
New! AutoCAD® 2013 .DWG support: With the ability to read the new AutoCAD 2013 .DWG format, CorelCAD 2013 enables full compatibility when working with customers and partners who use the software. For users who receive and manipulate files created with the new AutoCAD format, strong read support is paramount. CorelCAD 2013 saves to .DWG natively, so you can expect full compatibility, support, features, and CorelCAD file attributes in .DWG format.

Work with industry-standard CAD features

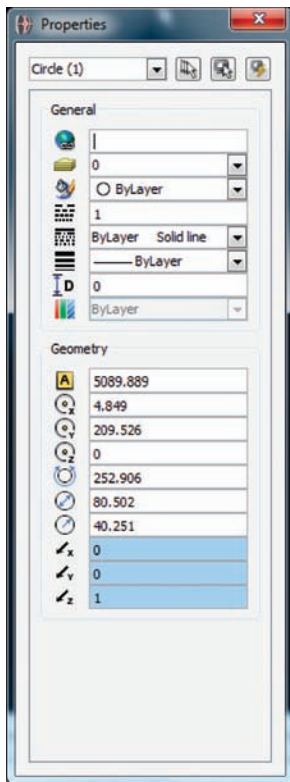
Experienced CAD users will be productive immediately working in an environment filled with familiar features and tools.

Work in a familiar CAD user interface: If you've worked in other popular CAD applications, there's no learning curve with CorelCAD, so you

can be productive immediately. Offering a familiar CAD user interface — including the command line — you can quickly get to work using the same commands and keyboard shortcuts you already know.



Properties docker: Whether your background is graphic design or CAD, the Properties docker is a familiar, versatile feature. It gives you the ability to manipulate the geometry and properties of entities, including layers, colors, line styles, and line weights. You can also use the Properties docker to easily copy attributes from one object to another.



Give it a try

Copying properties

- 1 Open **SolarBuilding.dwg** in the Sample File folder on the press kit CD.

Give it a try

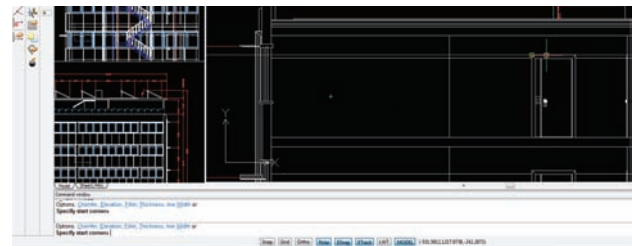
- 2 Click **Modify** menu ▶ **Property Painter**.

- 3 In the upper-left corner of the main window, select dimension **1.06±0.02**.

The command window displays instructions about the next step.


- 4 Click another dimension object, and press **Enter** to copy the properties.

Smart drafting tools: CoreCAD 2013 has all the smart drafting tools you expect in CAD software, offering the same functionality that professional designers have grown accustomed to in graphics software. You can speed up drafting with a variety of entity snap modes, entity tracking, and polar guides. Custom coordinate systems can be created to align the construction plane with drawing objects. You can also save time by using EntityGrips to quickly reposition, align, copy, or resize entities.



Give it a try

Using snap points and guides

- 1 Open **SolarBuilding.dwg** in the Sample File folder on the press kit CD.
- 2 In the main window, scroll to the right until a door is visible.
- 3 Ensure that the **ESnap** and **ETrack** buttons are active on the status bar.
- 4 Click the **Rectangle** tool  in the toolbox.
- 5 Hover over the door frame until the **End point** tip appears, and the guideline appears
- 6 Follow the guideline with the cursor and draw rectangle.

The top of the rectangle is aligned with the top of the door.

New! Align Viewport tool: The Viewport command offers new functionality that makes it easier than ever to arrange the elements of your drawings and gain better, more accurate sheet alignment. With CorelCAD 2013 viewports are now aligned by the geometry within each viewport. This means that users no longer have to rely on guesswork to determine if their locations are precise.

New & Enhanced! DGN Underlay and PDF Underlay: you can now reference Microstation® DGN files in a drawing as a DGN Underlay. You can control layer visibility and detach underlays from current drawings. In addition, the underlay clipping functionality lets create a masked boundary to display only a portion of either a DGN or PDF Underlay. PDF Underlay was introduced to CorelCAD in the May 2012 update.

New! In-place text editing: Instead of using a separate dialog box, CorelCAD 2013 offers direct onscreen text editing. With in-place text editing, it's easier than ever to modify the definitions of components (block definitions) or elements (referenced drawings). Plus, for greater efficiency, Component instances in your drawings now show changes in real time.

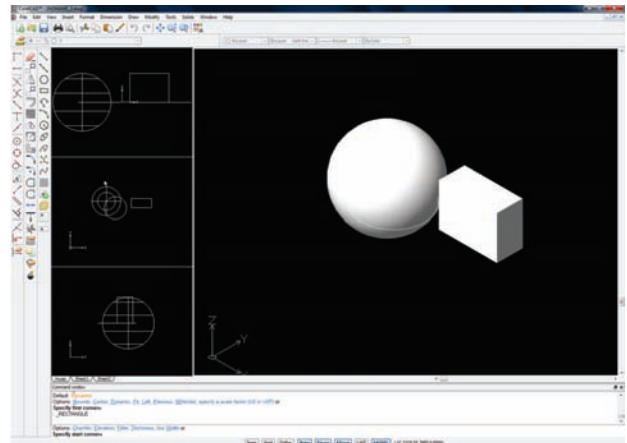
New! ExplodeX command: This new command will convert ellipses and splines into polylines, which is particularly beneficial for preparing drawings for export to other software applications or devices that do not support ellipses or splines (for example, legacy engraving devices). In addition, you can use the Explode command for other complex entities, such as Blocks.

Design in 2D and 3D

Along with a comprehensive set of 2D drawing features, CorelCAD 2013 includes a set of 3D solid modeling tools.


Solid modeling tools: With CAD increasingly heading in the direction of 3D design, CorelCAD offers tools to help you down this path. The application includes a set of 3D solid modeling tools that you'd only expect to find in software at

five times the price. Just like 3D CAD applications, you can add 3D solid primitives to your design and use Boolean operations to unite, intersect and subtract bodies. 2D entities can be extruded, revolved, or swept along a path. You can also loft between 2D entities to create solid objects. CorelCAD also gives you the ability to slice and intersect solids, and edit edges, faces and bodies of 3D solids.



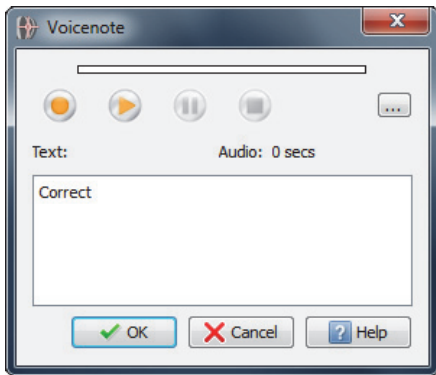
Give it a try

Designing in 3D

- 1 Click **File** menu ► **New**, choose the standard template, and click **Open**.
- 2 Type **Sphere** at the command prompt.
- 3 Click in the graphics area to set the center point, and drag to set the radius.
- 4 Click **View** menu ► **View Tiles Manager**.
- 5 In the View Tiles dialog box, click the **New** option.
- 6 Choose **3D** from the **Orientation** drop-down menu.
- 7 Choose **Four:Left** from the **Default configurations** list, and click **OK**.
- 8 Click the **Rectangle** tool  in the toolbox, and draw a rectangle.
- 9 With the rectangle selected, click **Solids** menu ► **Draw** ► **Extrude**, and drag in the drawing window.
- 10 With the box and sphere selected, click **View** ► **Shade**.

Unique collaboration tools: Most CAD projects demand the input and feedback of an entire team, so effective collaboration and annotation tools are critical. With the VoiceNotes feature, CorelCAD 2013 lets you add recorded messages, reminders, or instructions directly in your drawing. Great for a quick onsite or in-meeting review, VoiceNotes allow you to quickly document your ideas so they can be incorporated later.


You can also easily mark up drawing items with freehand sketches or attach other drawings and images as references, which can be clipped to show only the relevant portions. To accelerate and simplify reviews, you can mask portions of a drawing to exempt them from annotations.



Give it a try

Annotating with VoiceNotes

- 1 Click **Insert** menu ► **Insert/Edit VoiceNote**, or type **VoiceNote** at the command prompt.
- 2 Select a point in the drawing to place the VoiceNote and open the VoiceNote dialog box.
- 3 Using the controls in the VoiceNote dialog box, record an audio note. You can also add a text message to a VoiceNote.
- 4 Click **OK**.

A VoiceNote icon appears in the drawing .

You can open a VoiceNote by typing **VoiceNote** at the command prompt, and clicking a VoiceNote icon.

New! Revision Cloud tool: This new tool lets users create Revision Clouds to highlight areas that require or contain revisions, making the review and revision processes simpler and more efficient. Drawing areas can be accentuated with specific shapes, such as rectangular, elliptical, and freehand clouds. In addition, you can set the specific layer for a cloud, line color, style, and weight, as well as adjust the radius of the cloud's sequential arc.

Built for speed on Windows® & Mac OS®

CorelCAD 2013 lets you work quickly and efficiently on both Windows and Mac OS.

Operating system freedom: CAD programs have traditionally been designed to run almost exclusively on Windows operating systems, but CorelCAD changes that. Whichever OS you prefer, Mac or Windows, CorelCAD lets you work quickly and efficiently on your platform of choice. And while some Mac OS CAD tools aren't nearly as feature-rich as their Windows equivalent, CorelCAD is designed to give Windows and Mac users almost the same level of functionality (*all features apply to both operating systems unless noted*). For a comparison of features available on Windows and Macintosh operating systems, see *Comparing CorelCAD 2013 for Windows and Mac OS* on page 13.

New! Windows® 8 and Mac OS® Mountain Lion (10.8) support: CorelCAD 2013 is fully accessible for Windows 8 users through the desktop. In addition, Mac users can take full advantage of Mac OS X Mountain Lion features, including full screen application mode.

New! Native 64-bit support: As a native 64-bit Windows application, CorelCAD seamlessly processes large CAD files, which offers potentially significant workflow performance increases.

Enhanced! Application performance and speed: CorelCAD 2013 offers increased application speed for both Windows and Mac users. Memory access has been improved to expedite the loading process for larger drawings, offering up to 40% reduction in loading time.

Customize & automate for greater efficiency

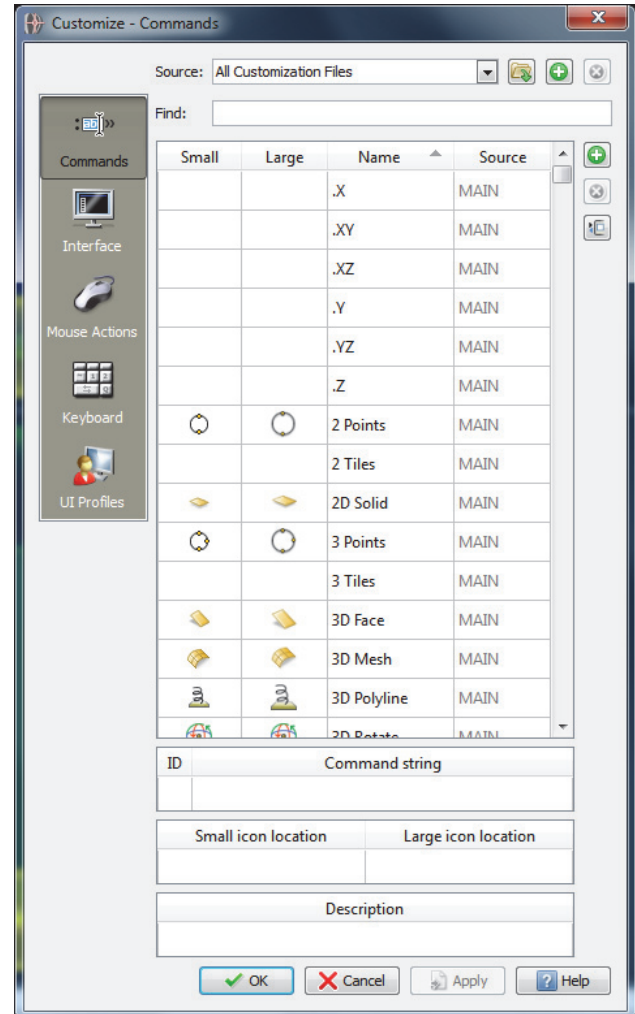
With CorelCAD 2013, you don't need programming knowledge to customize the interface. You can also automate tasks or add new functionality to the application.

Automation support: You can extend your productivity by taking advantage of the LISP and Microsoft® Visual Studio® Tools for Applications (VSTA)* programming interfaces to automate repetitive tasks and create your own functions, routines, and plug-ins. You can also access the plug-in store for CorelCAD Add-Ons and third-party enhancements that can help you add new functionality to the application (*Windows version only).

Enhanced! Microsoft® Visual Studio® Tools for Applications (VSTA) support: With the new VSTA Manager toolbar, you can easily record, edit, and run VSTA macros. CorelCAD 2013 offers built-in VSTA features, which make it easy for anyone to automate repetitive tasks and command sequences. In addition, integration with the VSTA development environment offers extended functionality to help users create advanced macros.

Enhanced! LISP support: CorelCAD 2013 supports continued LISP routines, which are commands that span multiple lines of code. CorelCAD 2013 LISP programming follows the same structure as typical LISP programming in other CAD applications, making it easy to reuse existing solutions without needing to recompile.

UI customization: For every industry that relies on CAD tools, there's a different workflow. To that end, CorelCAD is easily customizable to meet the needs of a variety of sectors and projects. Without any programming knowledge, you can fine-tune the UI to your working needs. Custom workspace configurations can then be saved in user profiles and deployed throughout an organization to tailor the UI to specific project needs and maximize productivity.



Organized layouts: CorelCAD lets you organize drawings into multiple tiled layouts using tabbed sheets. Each sheet can determine a different style of printing or plotting. The drawing window can be divided into multiple views, each displaying the drawing from a unique perspective. You can place drawing borders, title blocks, equipment lists, or other information on the sheets. You can also switch between model and paper space with just a double-click to adjust the representation of the model or edit it.

Compatibility for a smoother workflow

CorelCAD lets you easily collaborate and share with colleagues and clients with support for a variety of industry-standard formats.

New! Access drafts and sketches from CorelDRAW®*: Many designers prefer to use a creative graphics application for making first sketches, prior to getting down to the precise CAD drafting and 2D/3D modeling work. To that end, CorelCAD 2013 lets users import CorelDRAW (CDR) and Corel DESIGNER (DES) files as model space objects with a representation in a layout sheet. With CorelCAD 2013, you can work seamlessly with multi-page CDR files (from version 8 to X6) and DES files (from version 10 to X5).

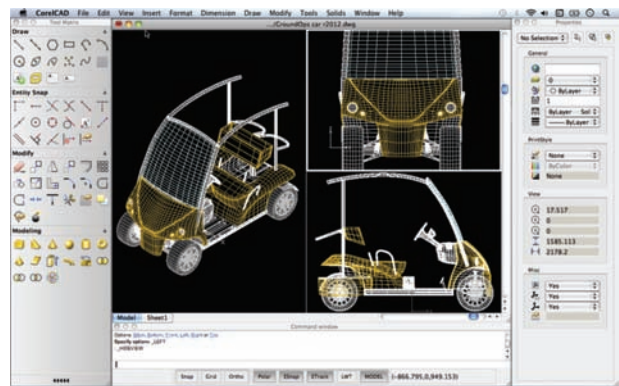
Publish to CorelDRAW® and Corel DESIGNER®: CAD files aren't only used in Engineering departments, but integrating CAD files into other corporate workflows has always been a challenge. Graphics professionals working in other areas of a company regularly have to deal with CAD files because they often contain content ideal for presentations, technical documentation, or marketing materials. CorelCAD simplifies the repurposing of CAD files by offering export to CorelDRAW and Corel DESIGNER formats*, so you can quickly access and easily reuse that information.

Hassle-free file sharing: CorelCAD also facilitates collaboration with colleagues and clients with support for a variety of leading industry-standard formats, including SVG, ACIS SAT and DWF. And the ability to save to PDF ensures that non-CAD users can view your drawings.

Repurpose published content: With support for both PDF and DGN underlays, CorelCAD 2013 makes it easy to reuse published PDF and CAD files (Microstation DGN) as external references in your drawings.

(*Windows version only)

Repurpose 3D CAD files: With support for the 3D exchange file format SAT, CorelCAD lets you open and work with 3D models. You can also save a 3D design to SAT to repurpose it with advanced visualization options in Corel DESIGNER Technical Suite with Deep Exploration CCE or to create high-quality technical illustrations with Corel DESIGNER (available separately).



Print 3D designs from CorelCAD: You can export multiple 3D solid objects to stereolithographic file format (STL), the most commonly used format for processing 3D prints. STL support also provides a direct connection to 3D printers, which lets you print 3D prototypes.

Work with GIS files: CorelCAD 2013 provides support for GIS files in ESRI Shape (.SHP) file format. This lets you visualize maps and geospatial models that were created by geographic information systems (GIS) applications.

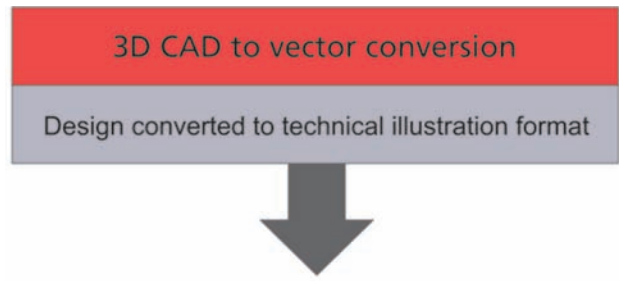
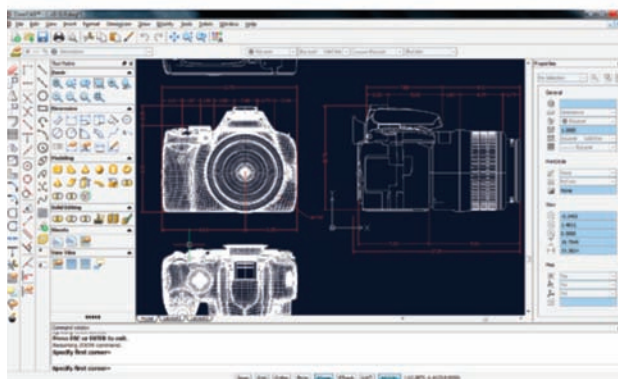
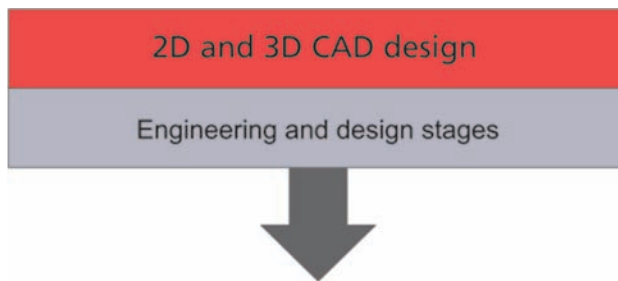
4



Integrating CorelCAD™ 2013 into other graphics workflows

CorelCAD 2013 bridges the gap between CAD and other graphics workflows by offering import from and export to CDR and DES formats. CAD applications usually provide very little file support for exporting drawings, creating a disconnect when you're trying to repurpose CAD for technical illustration or marketing design.

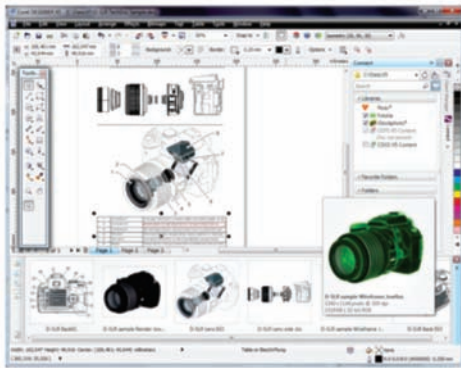
Unique to CorelCAD, this level of file support creates a complete, compatible graphics workflow from Corel, covering everything from concept design (CorelDRAW or Corel Painter), to CAD (CorelCAD), technical illustration (Corel DESIGNER) and marketing deliverables (CorelDRAW and Corel PHOTO-PAINT).



This simplifies the process of getting CAD models into downstream graphics workflows. CAD drawings are unreadable to most people. Exporting 3D CAD to a vector-based format, such as CorelDRAW or Corel DESIGNER, allows you to repurpose that content.

Technical illustration and documentation

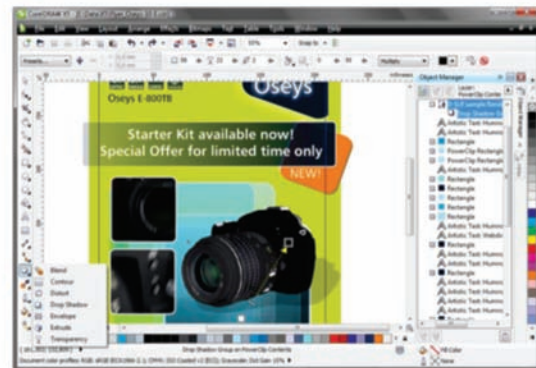
Create human-readable graphics from CAD files



The vector files can be used in Corel DESIGNER to create technical illustrations destined for a wide variety of documentation, such as assembly instructions, parts catalogs, and training materials. You can then leverage those technical illustrations in a creative way using CorelDRAW to create a range of marketing materials, such as flyers, web pages, presentations, and more.

Create marketing materials

Include technical graphics in creative deliverables



5



Comparing CorelCAD™ 2013 for Windows® and Mac OS®

This table compares CorelCAD features available on Windows and Macintosh operating systems.

	Windows®	Mac OS® X
File support		
CorelCAD™ native file format	DWG™	DWG™
AutoCAD® r12 to 2013 DWG™ support	✓	✓
DXF™ (Drawing Exchange File) support	✓	✓
Template Drawings (DWT) support	✓	✓
Drawing web format (DWF™) support	✓	✓
DWGCODEPAGE support	✓	✓
Recovery of corrupted drawings	✓	✓
Raster image support (BMP, GIF, JPG, PNG, TIFF)	✓	✓
OLE support	✓	
Import CorelDRAW® (CDR) and Corel DESIGNER® (DES)	✓	
Export to CDR and DES	✓	
Export to PDF	✓	✓
Export to SVG (Scalable Vector Graphics)	✓	✓
Number of supported file formats - Import	12	10
Number of supported file formats - Export	17	15
User interface		
Edit multiple drawings (MDI)	✓	✓
Dockable Properties toolbar	✓	✓
Dockable Properties palette	✓	✓
Tool matrix	✓	✓
Right-click context menus	✓	✓
Command prompt area	✓	✓
Industry-standard command sequences	✓	✓
Options Settings Manager	✓	✓
Viewing, snapping, tracking, entity selection		
Layers Toolbar	✓	✓

	Windows®	Mac OS® X
Layer states (Save and Restore)	✓	✓
Layer Tools	✓	✓
Properties Toolbar	✓	✓
External References Manager (palette)	✓	✓
PDF Underlay	✓	✓
DGN (Microstation® CAD file format) Underlay	✓	✓
In-Place Editing of block definitions and external references	✓	✓
Block units for insertion in different units	✓	✓
Images / References / Underlay rectangular and polygonal clipping	✓	✓
Non-rectangular viewports	✓	✓
Rectangle creation with support for area and dimension	✓	✓
Associative dimensions	✓	✓
Arc length dimensions	✓	✓
Jogged radius dimensions	✓	✓
Line weights (display and print)	✓	✓
Masking Entities (Wipe out)	✓	✓
Tables	✓	✓
Multiline	✓	✓
Hatch editing	✓	✓
Gradient hatch	✓	✓
True Colors support	✓	✓
Redline and markup	✓	✓
Multi-language character set	✓	✓
TrueType Fonts support	✓	✓
Spell checking	✓	✓
Internal WYSIWYG multiline text editor	✓	✓
VoiceNotes	✓	✓
3D viewing and design		
3D model viewing	✓	✓
Projected (Isometric) views	✓	✓
Shaded / Rendered display modes	✓	✓
Lights	✓	✓
Materials Optional (w/ Render plug-in)	(✓)	
3D surface commands	✓	✓
3D solid modeling	✓	✓
Printing, plotting, layout sheets		
Multiple Layout Sheet Tabs (Multiple Paper Spaces)	✓	✓

	Windows®	Mac OS® X
Lock Layout Viewports	✓	✓
CTB Color table support	✓	✓
STB Style table support	✓	✓
Print Configuration Manager	✓	✓
PDF Creation using Print Style Tables	✓	✓
JPEG, PNG output using Print Style Tables	✓	✓
STL export for 3D printing	✓	✓
Customization		
Visual Menu and Toolbar Customization	✓	✓
User profiles management	✓	✓
CUI Menu files support	✓	✓
Menu Diesel expressions	✓	✓
Programming		
LISP (including support for LISP commands from other CAD applications)	✓	✓
COM API	✓	
Microsoft Visual Studio® Tools for Applications (VSTA) support	✓	
Licensing		
Single license	✓	✓
Network licenses	✓	✓
Maintenance (upgrade protection)	✓	✓
Educational licenses	✓	✓
OS support		
Windows® 8	✓	
Windows® 7, Windows Vista®, Windows® XP	✓	
Native 64-bit application	✓	
Mac OS® X Mountain Lion (10.8)		✓
Mac OS® X (10.5.8 & 10.7)		✓
MSI-based network deployment	✓	

Minimum system requirements

Windows®

- Microsoft® Windows® 8, Microsoft® Windows® 7, Windows Vista® or Windows® XP with latest service packs (32-bit version)
- Microsoft® Windows 8 or Windows® 7 (64-bit version)
- Intel® Pentium® 4 (2 GHz or faster)
- 2 GB RAM (4 GB or more recommended)
- 500 MB free hard disk space
- High-color (16 bit) graphics card (3D graphics accelerator card recommended)
- 1024 × 768 screen resolution (1200 × 800 recommended)
- Mouse or tablet
- CD-ROM drive for installation from CD
- Internet connection for installation from download, product activation, and access to the plug-in store

Mac OS®

- Apple® Mac® with Intel® processor
- Mac OS® X v10.5.8 (Leopard®), v10.6 (Snow Leopard®), v10.7 (Lion), or v10.8 (Mountain Lion)
- 1 GB RAM (2GB recommended)
- 500 MB hard-disk space
- 1024 × 768 display (1280 × 800 recommended) with 16-bit video card
- Mouse or tablet
- CD-ROM drive for installation from CD
- Internet connection for installation from download, product activation, and access to the plug-in store

About Corel

Corel is one of the world's top software companies, with more than 100 million active users in over 75 countries. We develop software that helps people express their ideas and share their stories in more exciting, creative, and persuasive ways. Through the years, we've built a reputation for delivering innovative, trusted products that are easy to learn and use, helping people achieve new levels of productivity. The industry has responded with hundreds of awards for software innovation, design, and value.

Our award-winning product portfolio includes some of the world's most widely recognized and popular software brands, including CorelDRAW® Graphics Suite, Corel® Painter™, Corel DESIGNER® Technical Suite, Corel® PaintShop® Pro, Corel® VideoStudio®, Corel® WinDVD®, Corel® WordPerfect® Office, WinZip®, Roxio Creator®, and Roxio® Toast®. Our global headquarters are in Ottawa, Canada, and major offices are in the United States, the United Kingdom, Germany, China, Taiwan, and Japan.

Copyright 2012 Corel Corporation. All rights reserved.

CorelCAD™ 2013 Reviewer's Guide

Protected by patents in the United States and elsewhere.

Product specifications, pricing, packaging, technical support and information ("specifications") refer to the retail English version only. The specifications for all other versions (including other language versions) may vary.

INFORMATION IS PROVIDED BY COREL ON AN "AS IS" BASIS, WITHOUT ANY OTHER WARRANTIES OR CONDITIONS, EXPRESS OR IMPLIED, INCLUDING, BUT NOT LIMITED TO, WARRANTIES OF MERCHANTABILITY, SATISFACTORY QUALITY, MERCHANTABILITY OR FITNESS FOR A PARTICULAR PURPOSE, OR THOSE ARISING BY LAW, STATUTE, USAGE OF TRADE, COURSE OF DEALING OR OTHERWISE. THE ENTIRE RISK AS TO THE RESULTS OF THE INFORMATION PROVIDED OR ITS USE IS ASSUMED BY YOU. COREL SHALL HAVE NO LIABILITY TO YOU OR ANY OTHER PERSON OR ENTITY FOR ANY INDIRECT, INCIDENTAL, SPECIAL, OR CONSEQUENTIAL DAMAGES WHATSOEVER, INCLUDING, BUT NOT LIMITED TO, LOSS OF REVENUE OR PROFIT, LOST OR DAMAGED DATA OR OTHER COMMERCIAL OR ECONOMIC LOSS, EVEN IF COREL HAS BEEN ADVISED OF THE POSSIBILITY OF SUCH DAMAGES, OR THEY ARE FORESEEABLE. COREL IS ALSO NOT LIABLE FOR ANY CLAIMS MADE BY ANY THIRD PARTY. COREL'S MAXIMUM AGGREGATE LIABILITY TO YOU SHALL NOT EXCEED THE COSTS PAID BY YOU TO PURCHASE THE MATERIALS. SOME STATES/COUNTRIES DO NOT ALLOW EXCLUSIONS OR LIMITATIONS OF LIABILITY FOR CONSEQUENTIAL OR INCIDENTAL DAMAGES, SO THE ABOVE LIMITATIONS MAY NOT APPLY TO YOU.

Corel, CorelCAD, the Corel Balloon logo, the Corel logo, CorelDRAW, Corel DESIGNER, Digital Studio, Painter, PaintShop, Quattro Pro, VideoStudio, WinDVD, WinZip, and WordPerfect are trademarks or registered trademarks of Corel Corporation and/or its subsidiaries in Canada, the U.S. and/or other countries.

ARES is a registered trademark of Graebert GmbH.

All trademarks or registered trademarks are the property of their respective owners.

CorelCAD™ 2013

powered by ARES®

Media Contact North America

Liz Mitchell
PR Manager
Corel Corporation
613-728-0826 ext. 1223
liz.mitchell@corel.com



Corel Corporation
1600 Carling Ave.
Ottawa, ON
Canada K1Z 8R7

Corel UK Limited
Sapphire Court
Bell Street
Maidenhead
Berkshire SL6 1BU
United Kingdom

Corel TW Corp.
7F No. 399, Rueiguang Rd,
Neihu District, Taipei City
114, Taiwan